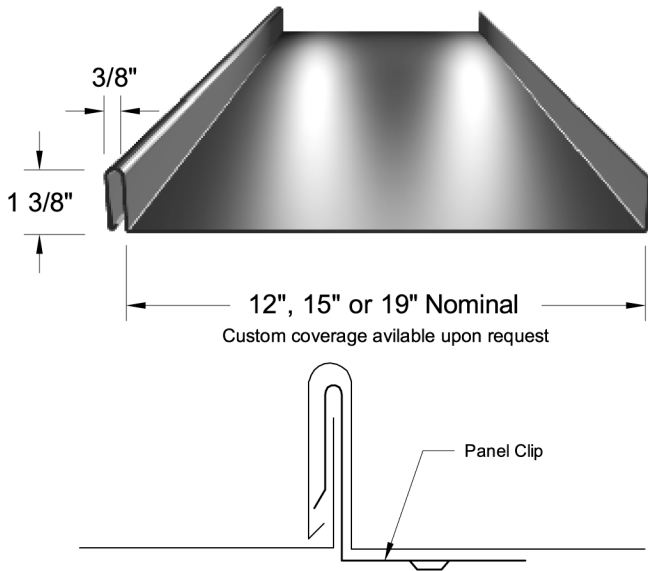


ZIP-RIB®

#305 Standing Seam Panel



Applications

Architectural roofing on slopes 3" or greater.
Continuous lengths up to 45 ft. Vertical walls, conical tapers.

Substrates

Solid deck / Plywood or Rigid insulation over decking
Requires minimum 30# felt underlayment and rosin slip sheet.

Materials

Aluminum (3000 series alloy)
Galvanized coated steel (G-90)
Alum-Zinc coated steel (AZ-50 & AZ-55)
Copper & lead coated Copper

Standard Gauges

.032" .040"
24 ga. 22 ga.
24 ga. 22 ga.
16 oz. 20 oz.

Also available in Zinc, Pre-Weathered Zinc & Stainless Steel

Finishes

Kynar & Metallic Fluoropolymer Coatings
Mill Finish, Brushed, Anodized
Texture: Smooth or Stucco Embossed

Manufacturing

Factory Formed

Testing / Agency Approvals

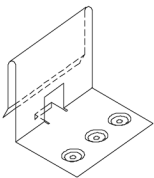
UL-90 Uplift ASTM E-331 ASTM E-283

Panel Side Joint

Popular integral batten, narrow seam with snap-fit side joint design permits fast and easy installation.

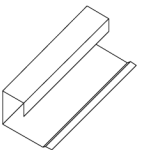
Some panels configurations are not suitable for all applications.
Contact sales & engineering for more information.

Components



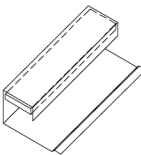
#305 Clip

One piece 24 gauge galvanized steel clip. Allows for free movement of panels during thermal expansion and contraction. Also available in Stainless Steel.



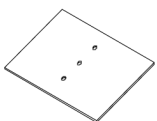
Gable/Endwall Clip

Continuous clip made from the same material required for the project. Supplied in 10'-0" lengths.



Sealed Gable/Endwall Clip

1/2" x 1 3/8" Closed cell, adhesive applied foam supplied in 100' lengths(#3068). Cut to suit and Insert into continuous gable/endwall clip supplied in 10'-0" lengths.



Punched Bearing Plate

6" x 6" 22 ga. galvanized.
For clip support over rigid insulation.

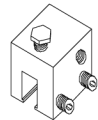


Seam Trim

Rib knee transition.
Supplied in 10'-0" lengths.

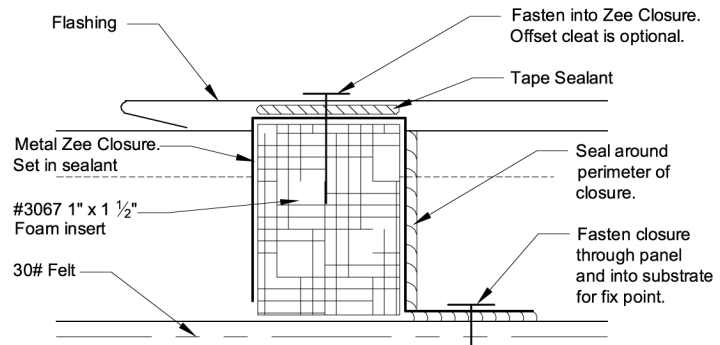
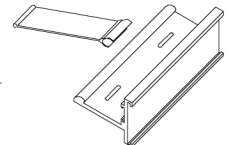
S-5-U HD Clamp

Aluminum block for use with S-5!™ snow retention system and for other practical purposes.



S-5!™ ColorGard Snow Retention System

Refer to PS-12 for more information.



Ridge & Hip Closure System

100' closed cell foam and 10' metal Zee closure.
Cut foam & metal closure to suit between panel ribs.

