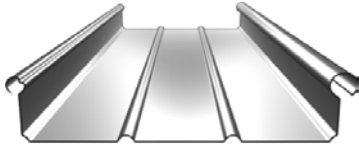


ROOF PANEL SELECTION GUIDE

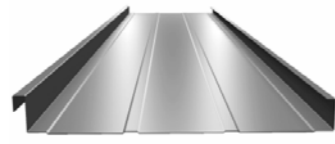
Panel	Seam Height	Panel & Seam Type	Standard Panel Coverage	Min. Slope Required	Panel will Accommodate			Field Fab	Testing / Agency Approvals See List Below
					Tapers (*2)	Domes	Barrels (*1)		
ZIP-RIB	2½"	Structural Standing Seam - Mechanically Seamed	12" 16"	¼" : 12"	•		•	A (*3),B,C,D,E,F,G,H,I,J,K,L,M,N,O,P,Q,R,S,T (*4) ,U	
ZIP-LOK 2"	2"	Structural Standing Seam - Mechanically Seamed	12" 16" 18"	½" : 12"	•		•	A (*5),C,E,F (*3), T	
ZIP-LOK 1 ½"	1½"	Structural Standing Seam - Mechanically Seamed	12" 16" 18"	½" : 12"	•		•	C,E,F (*3), T	
BD-1520	2"	Architectural - 1½" Wide Batten Cap	Up to 44½"	½" : 12"	•	•	•	A (*6), C, F (*3), Q, R (*3), T	
B1515R	1½"	Architectural - 1½" Wide Batten Cap	11" 15" 18" 22"	3" : 12"	•		•	T	
114 & 114R	1¼"	Architectural - 1¼" Wide Integral Batten Seam	10" 13" 17"	3" : 12"	•			T	
Classic Rib 305	1¾"	Architectural - Integral Standing Seam	12" 15" 19"	3" : 12"	•			C,E,F (*3),T	
Traditional Rib 306	1"	Architectural - Standing Seam Cap	10" 14" 17½" 22"	3" : 12"	•		•	C,E,F (*3),T	



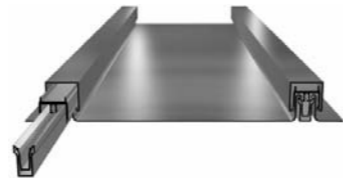
[ZIP-RIB](#)



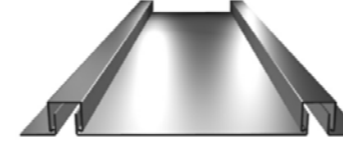
[ZIP-LOK 2"](#) [ZIP-LOK 1 ½"](#)



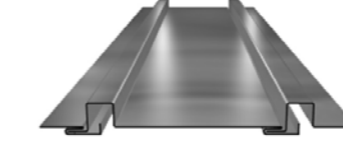
[BD-1520](#)



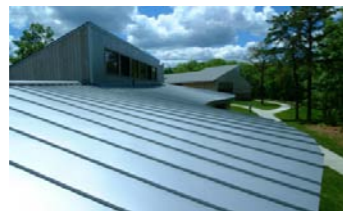
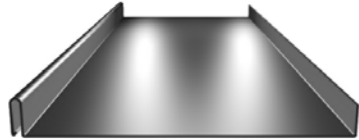
[B1515R](#)



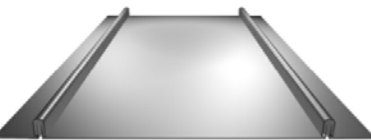
[114 & 114R](#)



[Classic Rib 305](#)



[Traditional Rib 306](#)



- *1 The minimum radius achieved will vary upon panel, width, material, gauge and length required. See Product Performance Data Chart for more information.
- *2 Consult factory for additional fabrication limitations based on panel, material gauge, length required and building design.
- *3 Achieved for most common panel variations. Not tested in all exotic material types and/or all wider panel widths.
- *4 Achieved with both Aluminum and Steel.
- *5 Achieved with both 12" and 16" panels; 22 ga & 24 ga Galvalume only.
- *6 .040 & .050 Aluminum only.

- (A) Mod. E330 ASTM E-1592 Uniform Uplift Test
- (B) ASTM E-1646 Water Infiltration
- (C) ASTM E-331 Water Infiltration
- (D) ASTM E-1680 Air Infiltration
- (E) ASTM E-283 Air Infiltration
- (F) UL-580 Uplift Rating Class 90
- (G) UL-701 Fire Rating Class A
- (H) ASTM E-2140 Water Head
- (I) ASTM E-108 Fire Test
- (J) AAMA-501.1 Dynamic Water Test
- (K) Factory Mutual FM4471 Class 90
- (L) Factory Mutual FM4471 Class 105
- (M) Factory Mutual FM4471 Class 150
- (N) FEMA Impact Resistance
- (O) Miami / Dade County Approval
- (P) Florida DOE SSTD12-99
- (Q) Florida Building Code Approval
- (R) Concent Load Testing
- (S) Clip Wear Test
- (T) New York City MEA Approved for Steel
- (U) U.S. Corps of Engineers Tested